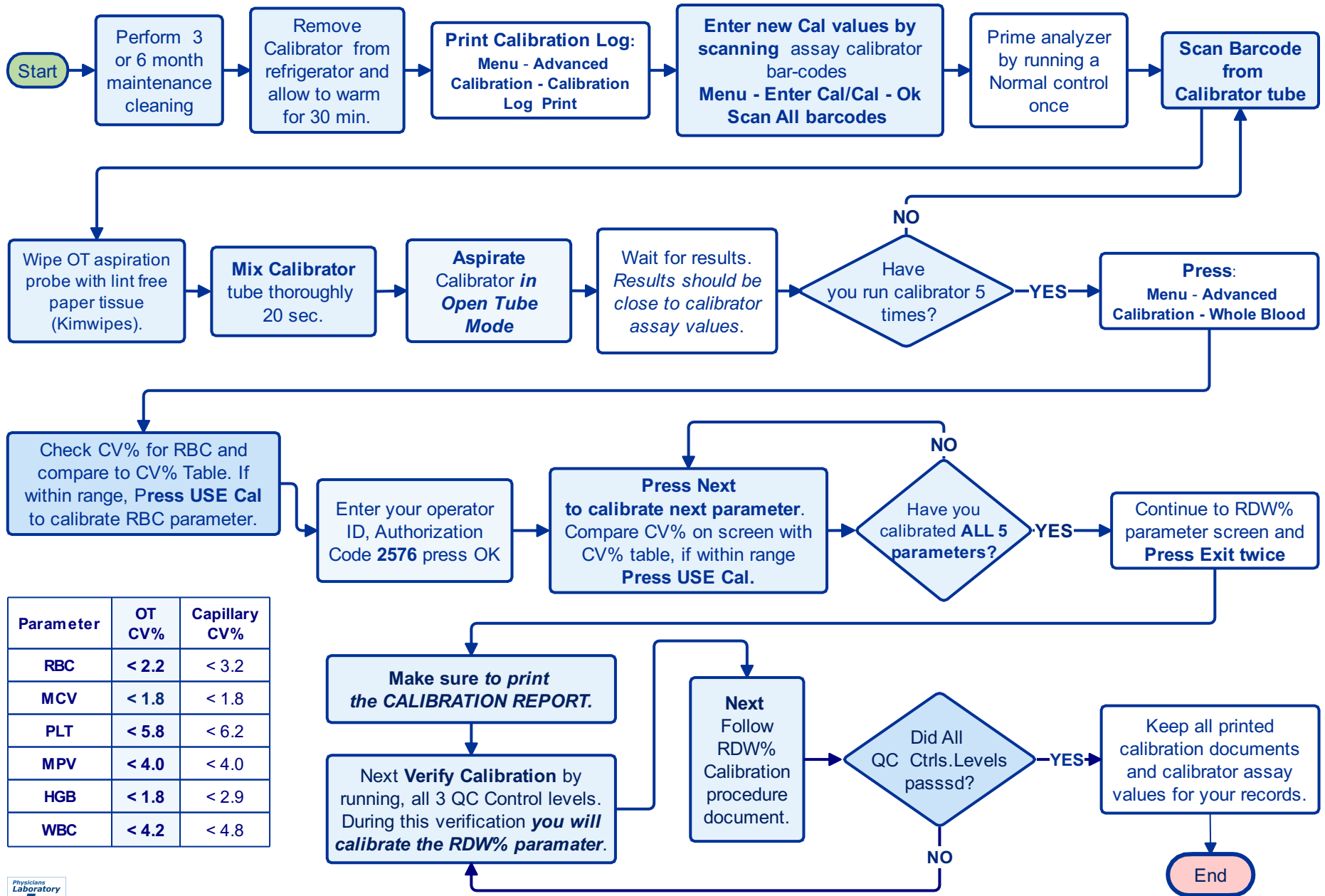


# Calibration Procedure for Medonic M Series Analyzer



Parameter	OT CV%	Capillary CV%
RBC	< 2.2	< 3.2
MCV	< 1.8	< 1.8
PLT	< 5.8	< 6.2
MPV	< 4.0	< 4.0
HGB	< 1.8	< 2.9
WBC	< 4.2	< 4.8

## RDW% Calibration for Whole Blood & Capillary Modes for Medonic M Series

### Important Notes

**Immediately after performing the Whole Blood calibration and during the calibration verification process**, locate the QC assay sheet for the **Normal QC Control** and identify the **RDW% target value**. This value is required for RDW% calibration. If you are calibrating in **Capillary Mode (MC)**, repeat the same steps outlined below, using the **micro-capillary device**.

#### ● **Run Low QC Control (Calibration Verification)**

- Scan and run the *Low QC Control* in **Open Tube** mode.
- This step is for **calibration verification**.
- Once results are obtained, proceed to Step 2.

#### ● **Run Normal QC Control (Calibration Verification)**

- Scan and run the *Normal QC Control* in **Open Tube** mode.
- This step is also for **calibration verification**.
- Once results are obtained, proceed to Step 3.

#### ● **Access Calibration Menu**

- Press: Menu ► Advance ► Calibration ► Whole Blood.

#### ● **Navigate to RDW%**

- Press the **Next** key to cycle through parameters (RBC, MCV, HGB, etc.) until you reach **RDW%**.

#### ● **Enable Editing**

- Tap the blank square on the screen.
- If prompted, enter your **Operator ID** and **authorization code (2576)**.
- Press **OK** to save.

#### ● **Enter Target Value (Performing RDW% Calibration)**

- Input the **RDW% target value** from the Normal QC Control.
- Press **OK** to save.

#### ● **Print Calibration Report**

- Press the **Exit** key twice.
- Then press **OK** to print the **RDW Calibration Report**.
- Keep the printout for your records.

#### 1. **Print Recalculated Result**

- Press **Exit** twice, then go to the **Sample** tab.
- Print the **Recalculated Result** and keep it for your records.

#### 2. **Finalize Calibration Verification**

- Run the *High QC Control* in **Open Tube** mode to complete the **Whole Blood calibration verification**. *Make sure all QC controls passed within manufactures established ranges.*

#### 3. **Documentation**

- Keep **all printed documents** for your records.

